

ASSESSMENT DAY

College of Business, Engineering and Technology
School of Engineering and Information Technology
BSET

March 7, 2022

Strengths

Challenges

Recommendations

Academic Assessment

	LEVEL	FOCUS	CONDUCTED BY	FREQUENCY
Academic Success Committee	Program	<ul style="list-style-type: none"> Quality of assessment practices 	Committee of peers	Years 1 & 2
Instructional Program Review	Program / Cluster	<ul style="list-style-type: none"> Enrollment, retention, completion Industry certifications and job placement Program budget and staffing Advisory committees Curriculum changes 	Committee of peers	Year 3
Assessment Day	Course/ Program	<ul style="list-style-type: none"> Enrollment by demographics Graduation and retention Average class size Course success rate Placement rate SLOs, PLOs and ILOs 	Program Chair and Faculty	Years 1, 2, 3

Programs

[6331 - Bachelor of Science in Engineering Technology \(BSET\)](#)

[6333 - Bachelor of Science in Engineering Technology - Electrical Engineering Technology Concentration](#)

[3004 – Construction and Design](#)

School of Engineering & Information Technology – BSET

Last Assessment Day Action Items

Last Assessment Day: (03-02-2021)

- Continuous review of course outcomes and alignment to program outcomes and MCD's;
- Maintain a consistent threshold for all course and program outcomes (70%);
- Ali M. work with Ron re: “auto grad” for certificate completers;
- Account for catalog year in automated email;
- Review courses that may need renumbering (ETI4448, ETS3543)

Program Educational Objectives (PEO)

- 1. Career:** Graduates will use their broad understanding of the key principles and practices of engineering technology, the written and oral communications skills, and the ability to work with others to apply these skills and knowledge to the design, implementation, and maintenance of systems.
- 2. Skills:** Graduates will contribute to their profession using the mathematical and scientific concepts that underlie engineering technology applications, will apply this understanding, and acquire new skills and knowledge necessary to analyze technology problems and develop suitable solutions.
- 3. Professionalism and Ethics:** Graduates will understand the ethical, human, and social issues of their field and will be involved members of their local and global communities acting as responsible technical professionals.
- 4. Life-Long Learning:** Graduates will be active contributors to their employer and their profession with a strong commitment to continuous individual and organizational improvement, effective communication, teamwork, quality, timeliness, and continued professional development

Program Learning Outcomes
BS Engineering Technology (BSET) # 633100
BS Engineering Technology with Electrical Engineering
Technology Concentration #633300

Graduates of the program will be able to:

1. Apply knowledge, techniques, skills and modern tools of mathematics, science, engineering, and technology to solve broadly-defined engineering problems appropriate to the discipline;
2. Design systems, components, or processes meeting specified needs for broadly-defined engineering problems appropriate to the discipline;
3. Apply written, oral, and graphical communication in broadly-defined technical and non-technical environments; and an ability to identify and use appropriate technical literature.
4. Conduct standard tests, measurements, and experiments and to analyze and interpret the results to improve processes; and
5. Function effectively as a member as well as a leader on technical teams.

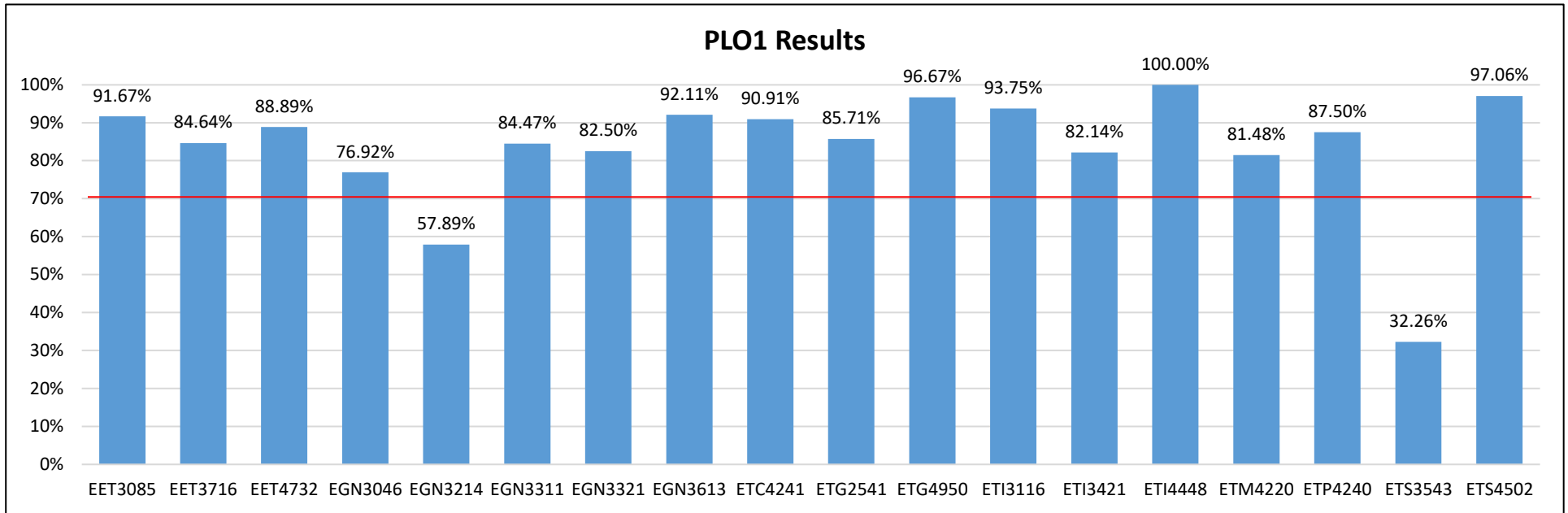
Program Learning Outcomes

Construction and Design Advanced Technical Certificate #300400

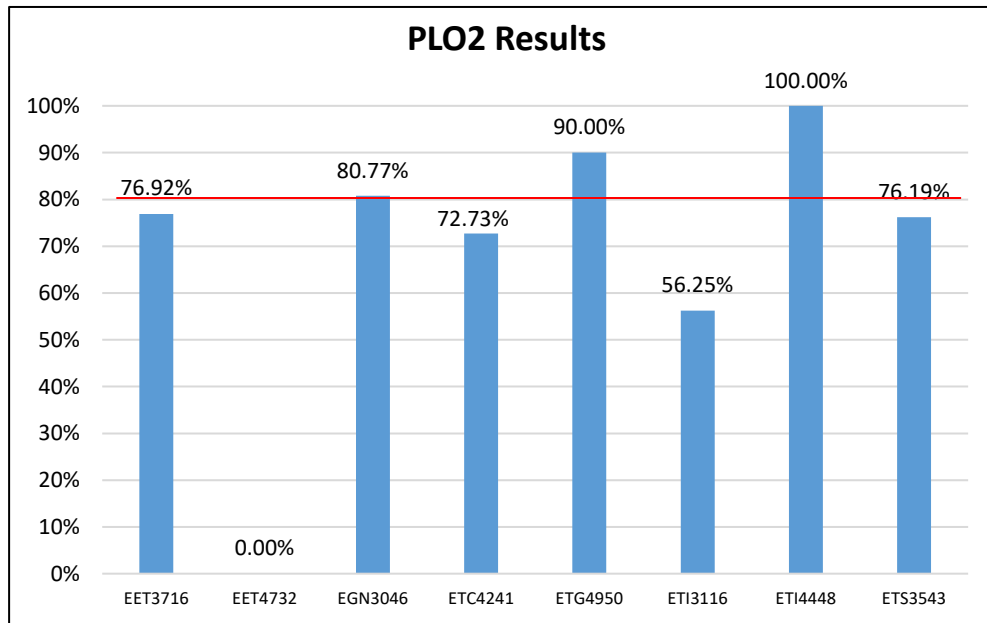
Graduates of the program will be able to:

1. Implement engineering principles in construction of residential and commercial building projects.
2. Design and understand basic structural systems in construction.
3. Apply principles of construction technology in construction of buildings.
4. Analyze basic construction systems and their applications based on engineering principles.
5. Develop construction plans and procedures.

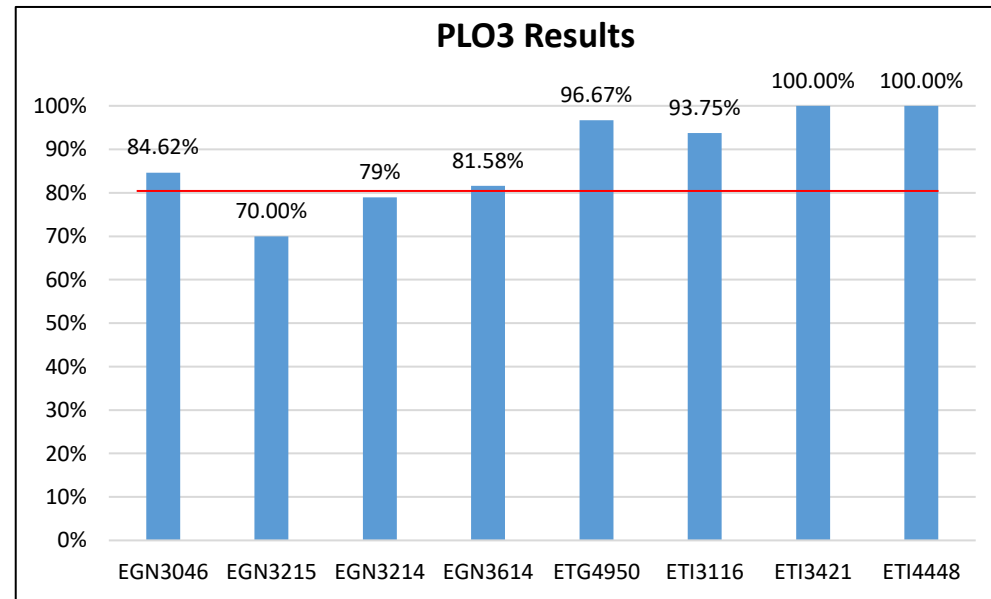
Assessment Results # 633100



PLO1: Apply knowledge, techniques, skills and modern tools of mathematics, science, engineering, and technology to solve broadly-defined engineering problems appropriate to the discipline. *Target: 70% of the students achieved 70% or higher in all assessment measures*

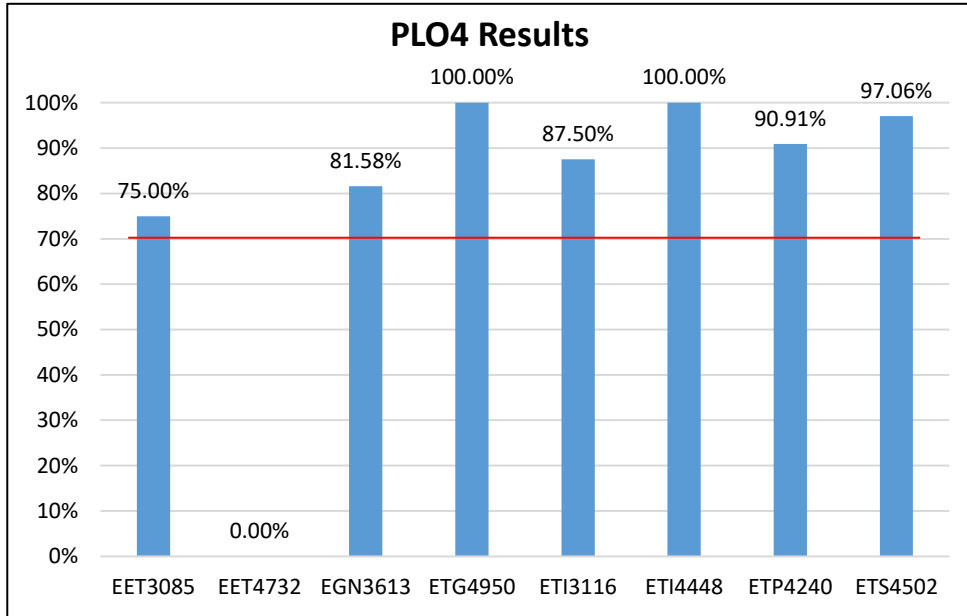


PLO2: Design systems, components, or processes meeting specified needs for broadly-defined engineering problems appropriate to the discipline. *Target: 80% of the students achieved 70%/75% or higher in all assessment measures*

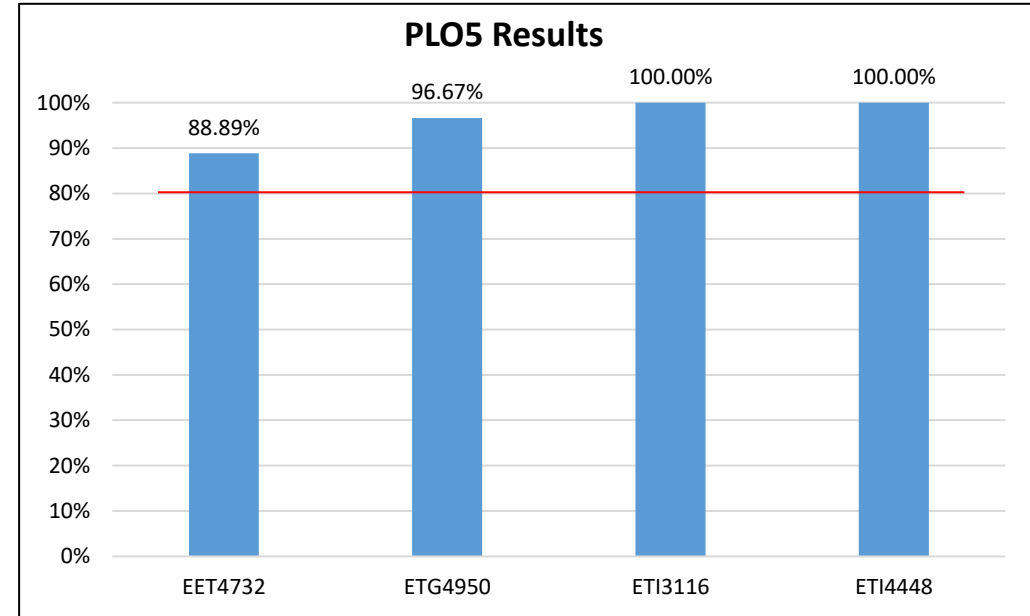


PLO3: Apply written, oral, and graphical communication in broadly-defined technical and non-technical environments; and an ability to identify and use appropriate technical literature. *Target: 80% of the students achieved 70% or higher in all assessment measures*

Assessment Results # 633100



PLO4: Conduct standard tests, measurements, and experiments and to analyze and interpret the results to improve processes. *Target: 70% of the students achieved 70% or higher in all assessment measures*



PLO5: Demonstrate an ability to function effectively as a member or leader on a technical team. *Target: 80% of the students achieved 75% or higher in all assessment measures*

Assessment Data 2019-2020 and 2020-2021: Programs and Institutional Learning Outcomes

Program	Critical/ Creative Thinking		Communication		Cultural Literacy		Information and Technical Literacy	
	19/20	20/21	19/20	20/21	19/20	20/21	19/20	20/21
6331-B.S. in Engineering Technology	56.3%-100%	0%-100%	81.8%-100%	70%-100%	100%	88.89%-100%	75%-100%	70%-100%
6333- B.S. in Engineering Technology - Electrical Engineering Technology Concentration	56.3%-100%	0%-100%	81.8%-100%	70%-100%	100%	88.89%-100%	75%-100%	70%-100%
3004 – Construction and Design	56.3%-100%	0%-100%	81.8%-100%	70%-100%	100%	88.89%-100%	75%-100%	70%-100%


Headcount by Major

Major	2016-2017	2017-2018	2018-2019	2019-2020	2020-2021
6331 - BS-ENGR TECH	102	115	127	119	150
6333 - BS-ENGR TECH - EE	62	75	67	53	57
3004 – Construction and Design			1		
School Total	164	181	195	171	207

Blank cells or indicate no headcount.

Graduates in Major

Major	2016-2017	2017-2018	2018-2019	2019-2020	2020-2021
6331 - BS-Engr Tech	13	15	16	21	28
6333 - BS-Engr Tech - EE	4	8	17	12	15
3004 – Construction and Design					
Total	17	23	33	33	43



Blank cells or missing years indicate no graduates.

Number of Graduates by Race/Ethnicity

Program, Race/Ethnicity	2018-2019	2019-2020	2020-2021
633100 - Engineering Technology B.S.	16	21	28
Asian		1	1
Black	1		1
Hispanic/Latino	4	6	6
Two or More Races		1	1
Unknown		1	
White	11	12	19
633300 - Eng. Tech. Elec. Eng. B.S.	17	12	15
American Indian/Alas			1
Asian	1		
Black	2	1	
Hispanic/Latino	3	5	
Two or More Races	2	2	3
White	9	4	11
Grand Total	33	33	43

Time to Degree

Program	Average of Yrs to Degree (2019-20 cohort)	Average of Yrs to Degree (2020-21 cohort)
633100 - Engineering Technology B.S.	2.97	2.29
633300 - Eng. Tech. Elec. Eng. B.S.	3.33	3.14

Graduation Rates

Major	Fall Cohort Year	# in Cohort	150% Graduates	150% Graduation Rate	200% Graduates	200% Graduation Rate
3004 – Construction and Design	2019 –200% In progress	1	0	0%	0	0%
	2020– In progress	1	0	0%	0	0%
6331- Engineering Tech	2015	22	6	27.3%	6	27.3%
	2016	18	5	27.8%	9	50%
	2017 –200% In progress	37	7	18.9%	11	29.7%
	2018 – In progress	41	12	29.3%	12	29.3%
6333- Engineering Tech- EE	2015	23	2	8.7%	8	34.8%
	2016	14	4	28.6%	7	50%
	2017 –200% In progress	19	6	31.6%	9	47.4%
	2018 – In progress	14	7	50%	7	50%

Fall terms include prior Summer term enrollment in major.
Graduation within 200% time includes graduates within 150% time.

Source: IR Program Assessment Data

Graduation Rates by Race/Ethnicity (1 of 2)

Major	Fall Cohort Year	Race/Ethnicity	# in Cohort	150% Graduates	150% Graduation Rate	200% Graduates	200% Graduation Rate
3004 – Construction and Design	2019 – 200% In progress	White	1	0	0%	0	0%
	2020 – In progress	Two or More Races	1	0	0%	0	0%
6331- Engineering Tech	2015	Asian	1	0	0%	0	0%
		Black	4	0	0%	0	0%
		Hispanic	5	1	20%	1	20%
		Unknown	1	1	100%	1	100%
		White	11	4	36.4%	4	36.4%
	2016	Black	2	1	50%	1	50%
		Hispanic	4	1	25%	3	75%
		Two or More Races	1	0	0%	0	0%
		White	11	3	27.3%	5	45.5%
	2017 – 200% In progress	Asian	2	0	0%	1	50%
		Black	4	0	0%	0	0%
		Hispanic	6	1	16.7%	1	16.7%
		Two or More Races	1	0	0%	0	0%
		White	24	6	25%	9	37.5%
	2018 – In progress	Asian	2	0	0%	0	0%
		Black	3	0	0%	0	0%
		Hispanic	5	3	60%	3	60%
		Two or More Races	4	1	25%	1	25%
Unknown		3	1	33.3%	1	33.3%	
White		24	7	29.2%	7	29.2%	

Graduation Rates by Race/Ethnicity (2 of 2)

Major	Fall Cohort Year	Race/Ethnicity	# in Cohort	150% Graduates	150% Graduation Rate	200% Graduates	200% Graduation Rate
6333- Engineering Tech- EE	2015	Asian	1	0	0%	0	0%
		Black	3	0	0%	0	0%
		Hispanic	1	0	0%	0	0%
		Two or More Races	1	0	0%	1	100%
		Unknown	1	0	0%	0	0%
		White	16	2	12.5%	7	43.8%
	2016	Black	1	0	0%	0	0%
		Hispanic	1	0	0%	0	0%
		Two or More Races	2	0	0%	1	50%
		White	10	4	40%	6	60%
	2017 – 200% In progress	American Indian	1	0	0%	1	100%
		Black	2	0	0%	0	0%
		Hispanic	5	2	40%	2	40%
		Two or More Races	2	1	50%	2	100%
		Unknown	1	0	0%	0	0%
		White	8	3	37.5%	4	50%
	2018 – In progress	Black	1	1	100%	1	100%
		Hispanic	2	1	50%	1	50%
		Two or More Races	1	0	0%	0	0%
White		10	5	50%	5	50%	

Graduation Rates By Gender

Major	Fall Term	Gender	# Students	Graduation			
				Graduated within 150% Time	Graduation Rate	Graduated within 200% Time	Graduation Rate
3004 – Construction and Design	2019	Male	1	0	0%	0	0%
	2020	Male	1	0	0%	0	0%
6331- Engineering Tech	2015	Female	2	0	0%	0	0%
		Male	19	6	31.6%	6	31.6%
		Unknown	1	0	0%	0	0%
	2016	Female	2	1	50%	1	50%
		Male	16	4	25%	8	50%
	2017	Female	5	1	20%	1	20%
		Male	31	6	19.4%	10	32.3%
		Unknown	1	0	0%	0	0%
	2018	Female	8	3	37.5%	3	37.5%
		Male	33	9	27.3%	9	27.3%
6333- Engineering Tech- EE	2015	Female	4	0	0%	1	25%
		Male	19	2	10.5%	7	36.8%
	2016	Female	1	1	100%	1	100%
		Male	13	3	23.1%	6	46.2%
	2017	Female	6	2	33.3%	3	50%
		Male	13	4	30.8%	6	46.2%
	2018	Female	6	3	50%	3	50%
		Male	8	4	50%	4	50%

Persistence Rate

Major	Term	Registered	Exclusions	Adjusted Cohort	Persisted by Program	
					N	%
3004 – Construction and Design	FA18 to SP19	1	0	1	1	100%
	FA19 to SP20	0				
	FA20 to SP21	1	0	1	0	0%

Persistence Rate by Race/Ethnicity

Major	Term	Race/Ethnicity	Registered	Exclusions	Adjusted Cohort	Persisted by Program	
						N	%
3004 – Construction and Design	FA18 to SP19	Asian	1	0	1	1	100%
	FA19 to SP20						
	FA20 to SP21	Two or more Races	1	0	1	0	0%

Persistence Rate by Gender

Major	Term	Gender	Registered	Exclusions	Adjusted Cohort	Persisted by Program	
						N	%
3004 – Construction and Design	FA18 to SP19	Male	1	0	1	1	100%
	FA19 to SP20						
	FA20 to SP21	Male	1	0	1	0	0%

Retention Rates

Program and Cohort Year		Registered	Exclusions	Adjusted Cohort	Retained by DSC		Retained by Program		DSC Total Retained
					N	%	N	%	
6331 BS-Engr. Tech	2015	41	5	36	1	2.30%	23	63.90%	66.20%
	2016	67	12	55	1	2.00%	30	55%	57%
	2017	80	11	69	2	2.90%	41	59.42%	62.32%
	2018	98	15	83	1	1.2%	56	67.5%	68.7%
	2019	117	23	94	1	1.1%	61	64.9%	66%
6333 BS-Engr. Tech - EE	2015	28	2	26	0	0.00%	16	61.50%	61.50%
	2016	44	2	42	2	5.00%	28	67%	71%
	2017	62	7	55	1	1.82%	30	54.55%	59.68%
	2018	53	16	37	0	0%	30	81.1%	81.1%
	2019	47	13	34	3	8.8%	24	70.6%	79.4%

Registered - Includes all students enrolled in the fall term of the specified year, with the specified program as their primary major.

Exclusions - Includes students who are deceased or graduated fall of the specified year or the following spring or summer.

Not retained - Students who were not registered the following fall term.

Retained by DSC - Students who were still registered at DSC the following fall but with a different primary major.

Retained by Program - Students who were registered the following fall with the same primary major.

Retention Rates by Race/Ethnicity (1 of 2)

Major	Fall Term	Race/Ethnicity	Registered	Exclusions	Adjusted Cohort	Retained by Program	
						N	%
6331- Engineering Tech	2017	Asian	2	0	2	0	0.0%
		Black	6	0	6*	3	50.0%
		Hispanic	15	2	13	8	61.5%
		Two or More Races	2	0	2	0	0.0%
		Unknown	2	1	1	1	100.0%
		White	53	8	45*	29	64.4%
	2018	Asian	5	0	5	4	80%
		Black	10	1	9*	5	55.6%
		Hispanic	16	2	14	11	78.6%
		Two or More Races	3	0	3	3	100%
		Unknown	3	0	3	1	33.3%
		White	61	12	49	32	65.3%
	2019	Asian	6	1	5	4	80.0%
		Black	9	0	9	6	66.7%
		Hispanic	23	5	17	12	66.7%
		Two or More Races	7	1	6	5	83.3%
		Unknown	4	1	3	2	66.7%
		White	68	15	53*	32	60.4%

**one or more students retained by DSC*

Registered - Includes all students enrolled in the fall term of the specified year, with the specified program as their primary major.

Exclusions - Includes students who are deceased or graduated fall of the specified year or the following spring or summer.

Adjusted Cohort - Registered students less exclusions.

Not retained - Students who were not registered the following fall term.

Retained by DSC - Students who were still registered at DSC the following fall but with a different primary major.

Retained by Program - Students who were registered the following fall with the same primary major.

Retention Rates by Race/Ethnicity (2 of 2)

Major	Fall Term	Race/Ethnicity	Registered	Exclusions	Adjusted Cohort	Retained by Program	
						N	%
6333- Engineering Tech- EE	2017	Am. Ind.	1	0	1	1	100%
		Asian	1	0	1	1	100%
		Black	7	1	6	3	50%
		Hispanic	9	0	9*	6	66.7%
		Two or More Races	5	0	5	4	80%
		Unknown	3	0	3	0	0%
		White	36	6	30	15	50%
	2018	Am. Ind.	1	0	1	1	100%
		Asian	1	1	0		
		Black	5	3	2	1	50%
		Hispanic	10	2	8	6	75%
		Two or More Races	7	1	6	6	100%
		White	29	9	20	16	80%
	2019	Am. Ind.	1	0	1	1	100%
		Asian	1	0	1	1	100%
		Black	3	0	3	2	66.7%
		Hispanic	7	5	2	1	50%
		Two or More Races	6	2	4	4	100%
White		29	6	23*	15	65.2%	

**one or more students retained by DSC*

Registered - Includes all students enrolled in the fall term of the specified year, with the specified program as their primary major.

Exclusions - Includes students who are deceased or graduated fall of the specified year or the following spring or summer.

Adjusted Cohort - Registered students less exclusions.

Not retained - Students who were not registered the following fall term.

Retained by DSC - Students who were still registered at DSC the following fall but with a different primary major.

Retained by Program - Students who were registered the following fall with the same primary major.

Retention Rates by Gender

Major	Fall Term	Gender	Registered	Exclusions	Adjusted Cohort	Retained by Program		
						N	%	
6331- Engineering Tech	2017	Female	12	1	11	5	45.45%	
		Male	67	10	57*	36	63.16%	
		Unknown	1	0	1	0	0.00%	
	2018	Female	13	1	12	7	67.5%	
		Male	84	14	70*	49	58.3%	
		PrefNoAns	1	0	1	0	0%	
	2019	Female	15	5	10*	6	60%	
		Male	98	18	80	53	66.3%	
		PrefNoAns	2	0	2	2	100%	
		Unknown	2	0	2	0	0%	
	6333- Engineering Tech- EE	2017	Female	10	0	10	5	50.00%
			Male	52	7	45*	25	55.56%
2018		Female	10	5	5	3	60%	
		Male	43	11	32	27	84.4%	
2019		Female	8	1	7	6	85.7%	
		Male	39	12*	27	18	66.7%	

**one or more students retained by DSC*

Placement

Program Title	Cohort Year	Grads Reported	Continuing Education	Employed		Estimated Average Annual Full-Time Wage	
				DSC	FCS	DSC	FCS
BS Engineering Technology (BSET) and BS Engineering Technology (BSET) – Electrical Concentration	2018/19	33	****	73%	73%	\$57,948	\$57,948
	2017/18	24	****	71%	71%	\$57,920	\$57,920
	2016/17	18	****	72%	72%	\$54,356	\$54,356
	2015/16	36	N/A	69%	69%	\$49,160	\$49,160
	2014/15	44	N/A	75%	75%	\$49,736	\$49,736
	2013/14	41	4%	95%	97%	\$37,952	\$49,832
	2012/13	65	11%	52%	52%	\$ 45,092	\$ 45,092

*Currently Inactive Program.

N/A - No placement data for the program.

Note: Programs with no graduates are excluded from this report for the reporting year.
 (****), (\$**,***), or (****%) - Number of graduates less than 10 but greater than 0 suppressed.

■ Indicates the College average above the State Averages
■ Indicates the College average same as the State Averages
■ Indicates the College average below the State Averages

Course Success Rates (1 of 2)

Major	Course	2017-2018		2018-2019		2019-2020		2020-2021		
		Attempted	% Successful	Attempted	% Successful	Attempted	% Successful	Attempted	% Successful	
6331- BS Engineering Technology	EET3085	39	74%	42	86%	72	76%	58	81%	↑
	EET3086					34	82%	33	79%	
	EGN2045	21	71%	44	91%	36	72%	31	87%	↑
	EGN3046	40	83%			41	90%	52	88%	
	ENG3214			29	79%	34	65%	40	78%	↑
	EGN3311	23	100%	37	100%	24	100%	47	98%	
	EGN3321	17	100%	26	100%	40	98%	53	100%	↑
	EGN3343					14	93%			
	EGN3613	39	87%	46	89%	55	82%	66	89%	↑
	ETC4241	7	100%	8	100%	11	100%	19	100%	
	ETC4414C							9	100%	
	ETC4415C							9	89%	
	ETG3533	19	95%	7	86%	12	100%	17	94%	
	ETG3541			17	100%	36	97%	30	90%	
	ETG3907	21	100%	24	96%					
	ETG4950C	35	91%	28	100%	30	100%	58	97%	
	ETI3116	31	97%	40	98%	33	97%	56	93%	
	ETI3421	30	93%	16	88%	26	100%	28	100%	
	ETI4186	25	84%							
	ETI4205			10	100%	19	100%	21	95%	
	ETI4448	39	90%	16	94%	30	97%	61	100%	↑
	ETI4640	13	100%			20	90%			
	ETI4704			22	100%	19	100%	21	100%	
	ETM4220	19	100%	24	100%	28	96%	39	97%	↑
ETM4331	14	100%	6	100%	9	100%	16	100%		
ETS4502C			19	95%	21	100%	38	97%		
Major		490	89%	539	93%	644	90%	802	93%	↑

Indicates a success rate of 90% or higher

Indicates a success rate between 70% and 89%

Indicates a success rate below 70%

Course Success Rates (2 of 2)

Major	Course	2017-2018		2018-2019		2019-2020		2020-2021	
		Attempted	% Successful	Attempted	% Successful	Attempted	% Successful	Attempted	% Successful
6333- BS Engineering Technology - EE	CET3198	25	56%	18	89%	21	67%	17	76%
	EET3716	20	80%	12	100%	18	89%	14	93%
	EET4158	15	87%	12	100%	17	88%	10	80%
	EET4732	16	94%	10	90%	18	100%	12	100%
	ETP4240	12	100%	16	100%	15	93%	11	100%
	ETS3543C	60	68%	50	72%	82	63%	82	65%
	ETS4502C	16	100%						
	Major	164	77%	118	92%	171	75%	146	75%

- Indicates a success rate of 90% or higher
- Indicates a success rate between 70% and 89%
- Indicates a success rate below 70%

Course Success Rates by Race/Ethnicity (1 of 3)

Program, Course, IM and Race/Ethnicity	2018-2019		2019-2020		2020-2021	
	Enroll	Success	Enroll	Success	Enroll	Success
6331 - BSET	539	93%	734	88%	802	93%
EET3085	51	90%	72	76%	58	81%
Asian	1	100%	4	75%	4	75%
Black	3	67%	9	89%	6	50%
Hispanic	10	100%	13	54%	9	78%
Two or More Races	5	100%	2	100%	1	100%
Unknown	2	50%	4	100%	3	100%
White	30	90%	40	78%	35	86%
EET3086	42	86%	34	82%	33	79%
American Indian			1	100%		
Asian	1	100%	2	100%	2	100%
Black	1	0%	1	100%	1	0%
Hispanic	3	100%	4	100%	4	75%
Two or More Races	2	100%	3	100%		
Unknown	2	100%	1	100%		
White	33	85%	22	73%	26	81%
EGN2045	27	85%	36	72%	31	87%
Am. Ind.	1	100%				
Asian			3	100%	2	100%
Black	1	100%	4	75%	4	75%
Hispanic	5	100%	5	40%	4	100%
Two or More Races	6	83%	4	75%	2	100%
Unknown			1	100%		
White	14	79%	19	74%	19	84%
EGN3046	44	91%	41	90%	52	89%
American Indian			1	100%		
Asian	1	100%	1	100%	2	100%
Black	6	83%	2	100%	6	83%
Hispanic	6	100%	11	91%	7	71%
Native Hawaiian/Paci					1	100%
Two or More Races	3	100%	6	67%	5	80%
Unknown	1	100%			2	100%
White	27	89%	20	95%	29	93%

Program, Course, IM and Race/Ethnicity	2018-2019		2019-2020		2020-2021	
	Enroll	Success	Enroll	Success	Enroll	Success
6331 - BSET	539	93%	734	88%	802	93%
EGN3214	29	79%	34	65%	40	78%
Asian			1	100%	1	100%
Black	4	75%	1	100%	5	60%
Hispanic/Latino	5	80%	7	57%	5	80%
Two or More Races	1	0%	2	50%	1	100%
Unknown			3	33%	4	75%
White	19	84%	20	70%	24	79%
EGN3311	37	100%	24	100%	47	98%
American Indian					1	100%
Asian	3	100%			2	50%
Black	2	100%	2	100%	4	100%
Hispanic	9	100%	5	100%	9	100%
Two or More Races	2	100%	1	100%	2	100%
Unknown			1	100%	2	100%
White	21	100%	15	100%	27	100%
EGN3321	26	100%	40	98%	53	100%
American Indian					2	100%
Asian	2	100%	2	100%	1	100%
Black	2	100%	3	100%	7	100%
Hispanic	6	100%	7	100%	6	100%
Two or More Races	1	100%	1	100%	5	100%
Unknown			2	100%	2	100%
White	15	100%	25	96%	30	100%
EGN3343			14	93%		
Asian			1	100%		
Black			2	50%		
Hispanic/Latino			5	100%		
Two or More Races			1	100%		
White			5	100%		
EGN3613	46	89%	55	82%	66	89%
Am. Ind	1	100%				
Asian	2	100%	2	100%	2	100%
Black	2	100%	6	83%	8	88%
Hispanic	11	91%	8	75%	8	75%
Two or More Races	5	100%	9	78%	3	100%
Unknown	1	100%	2	100%	3	100%
White	24	83%	28	82%	42	90%

Course Success Rates by Race/Ethnicity (2 of 3)

Program, Course, IM and Race/Ethnicity	2018-2019		2019-2020		2020-2021	
	Enroll	Success	Enroll	Success	Enroll	Success
6331 - BSET	539	93%	734	88%	802	93%
ETC4241	8	100%	11	100%	19	100%
Asian	1	100%				
Black			2	100%	2	100%
Hispanic					6	100%
Two or More Races			1	100%		
Unknown					1	100%
White	7	100%	7	100%	10	100%
ETC4414C					9	100%
Asian					1	100%
Hispanic/Latino					1	100%
White					7	100%
ETC4415C					9	89%
Asian					1	100%
Black					1	100%
Hispanic/Latino					2	100%
White					5	80%
ETG3533	7	86%	12	100%	17	94%
Black			1	100%	2	100%
Hispanic			2	100%	2	100%
Two or More Races	1	100%	1	100%	1	100%
White	6	83%	8	100%	12	92%
ETG3541	17	100%	36	97%	30	90%
American Indian/Alas					1	100%
Asian			1	100%	1	100%
Black	1	100%	4	100%	3	100%
Hispanic	7	100%	6	100%	3	100%
Two or More Races	3	100%	4	100%	2	100%
Unknown			1	100%	1	100%
White	6	100%	20	95%	19	84%
ETG4950C	28	100%	30	100%	58	97%
American Indian						
Asian	1	100%			2	100%
Black	3	100%			9	100%
Hispanic	6	100%	6	100%	10	100%
Two or More Races	2	100%	2	100%	5	100%
Unknown			1	100%	1	100%
White	16	100%	20	100%	31	94%

Program, Course, IM and Race/Ethnicity	2018-2019		2019-2020		2020-2021	
	Enroll	Success	Enroll	Success	Enroll	Success
6331 - BSET	539	93%	734	88%	802	93%
ETI3116	40	98%	33	97%	56	93%
Asian	1	100%	2	100%	4	100%
Black	1	100%	2	100%	6	100%
Hispanic	10	90%	5	100%	10	80%
Two or More Races	5	100%	3	100%	3	100%
Unknown	1	100%	1	100%	2	100%
White	22	100%	20	95%	31	94%
ETI3421	16	88%	26	100%	28	100%
Asian	1	100%			2	100%
Black					5	100%
Hispanic	4	100%	3	100%	6	100%
Two or More Races			4	100%	1	100%
Unknown			2	100%	2	100%
White	11	82%	17	100%	12	100%
ETI4205	10	100%	19	100%	21	95%
Asian			2	100%		
Black					2	50%
Hispanic	3	100%	8	100%	6	100%
Two or More Races	1	100%	1	100%	2	100%
Unknown					1	100%
White	6	100%	8	100%	10	100%
ETI4448	16	94%	30	97%	61	100%
American Indian			1	100%		
Asian	1	100%			2	100%
Black					10	100%
Hispanic	3	100%	6	83%	12	100%
Two or More Races	2	100%	2	100%	6	100%
Unknown			1	100%	1	100%
White	10	90%	20	100%	30	100%
ETI4640			20	90%		
Asian			1	100%		
Black			2	100%		
Hispanic/Latino			5	100%		
Two or More Races			2	100%		
White			10	80%		
ETI4704	22	100%	19	100%	21	100%
Asian			1	100%		
Black	3	100%			3	100%
Hispanic	5	100%	3	100%	3	100%
Two or More Races	2	100%	1	100%	1	100%
Unknown	1	100%	1	100%		
White	11	100%	13	100%	14	100%

Course Success Rates by Race/Ethnicity (3 of 3)

Program, Course, IM and Race/Ethnicity	2018-2019		2019-2020		2020-2021	
	Enroll	Success	Enroll	Success	Enroll	Success
ETM4220	24	100%	28	96%	39	97%
Am. Ind.	1	100%				
Asian	1	100%			1	100%
Black	2	100%	2	100%	1	100%
Hispanic	6	100%	2	100%	9	100%
Two or More Races			5	100%	2	100%
Unknown					1	100%
White	13	100%	18	94%	25	96%
ETM4331	6	100%	9	100%	16	100%
Asian	1	100%			1	100%
Black			1	100%	1	100%
Hispanic					1	100%
Two or More Races	1	100%	1	100%	1	100%
White	4	100%	7	100%	12	100%
ETS4502C	19	95%	21	100%	38	97%
Asian	1	100%			1	100%
Black					5	100%
Hispanic/Latino	5	100%	6	100%	4	100%
Two or More Races	1	100%			3	100%
Unknown			1	100%	2	50%
White	12	92%	14	100%	23	100%
6333 - BSET-EE	118	86%	171	75%	146	75%
CET3198	18	89%	21	67%	17	76%
American Indian			1	100%		
Asian					1	100%
Black	2	100%	2	0%	2	0%
Hispanic	6	83%	4	75%	2	50%
Two or More Races	2	50%	5	80%	1	100%
White	8	100%	9	67%	11	91%

Program, Course, IM and Race/Ethnicity	2018-2019		2019-2020		2020-2021	
	Enroll	Success	Enroll	Success	Enroll	Success
6333 - BSET-EE	118	86%	171	75%	146	75%
EET3716	12	100%	18	89%	14	93%
American Indian			1	100%		
Black	1	100%			4	75%
Hispanic	3	100%	5	100%	1	100%
Two or More Races	2	100%	3	67%	2	100%
White	6	100%	9	89%	7	100%
EET4158	12	100%	17	88%	10	80%
American Indian			1	100%		
Black	2	100%			2	0%
Hispanic	3	100%	5	80%		
Two or More Races	2	100%	2	50%	2	100%
White	5	100%	9	100%	6	100%
EET4732	10	90%	18	100%	12	100%
American Indian/Alas					1	100%
Black	1	100%			2	100%
Hispanic	3	100%	5	100%	1	100%
Two or More Races			2	100%	3	100%
White	6	83%	11	100%	5	100%
ETP4240	16	100%	15	93%	11	100%
American Indian			1	100%		
Asian	1	100%				
Black	2	100%	1	100%	1	100%
Hispanic	3	100%	4	100%		
Two or More Races	1	100%	3	67%	2	100%
White	9	100%	6	100%	8	100%
ETS3543C	50	72%	82	63%	82	65%
Asian	1	100%	4	75%	3	67%
Black	4	50%	7	57%	11	27%
Hispanic	10	70%	14	64%	16	63%
Two or More Races	6	67%	8	50%	7	71%
Unknown	1	100%	1	0%	3	100%
White	28	75%	48	67%	42	71%
Grand Total	657	92%	815	87%	948	90%

■ Indicates a success rate of 90% or higher
■ Indicates a success rate between 70% and 89%
■ Indicates a success rate below 70%

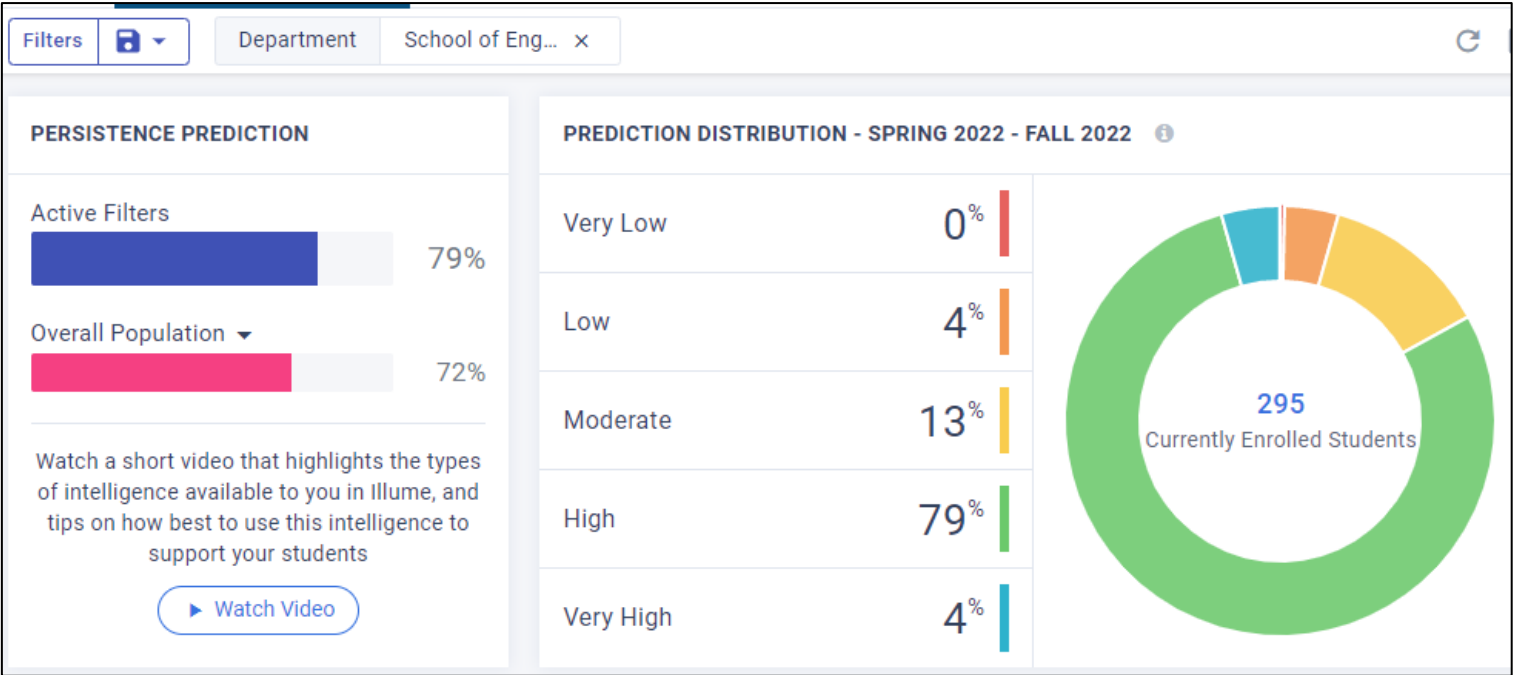
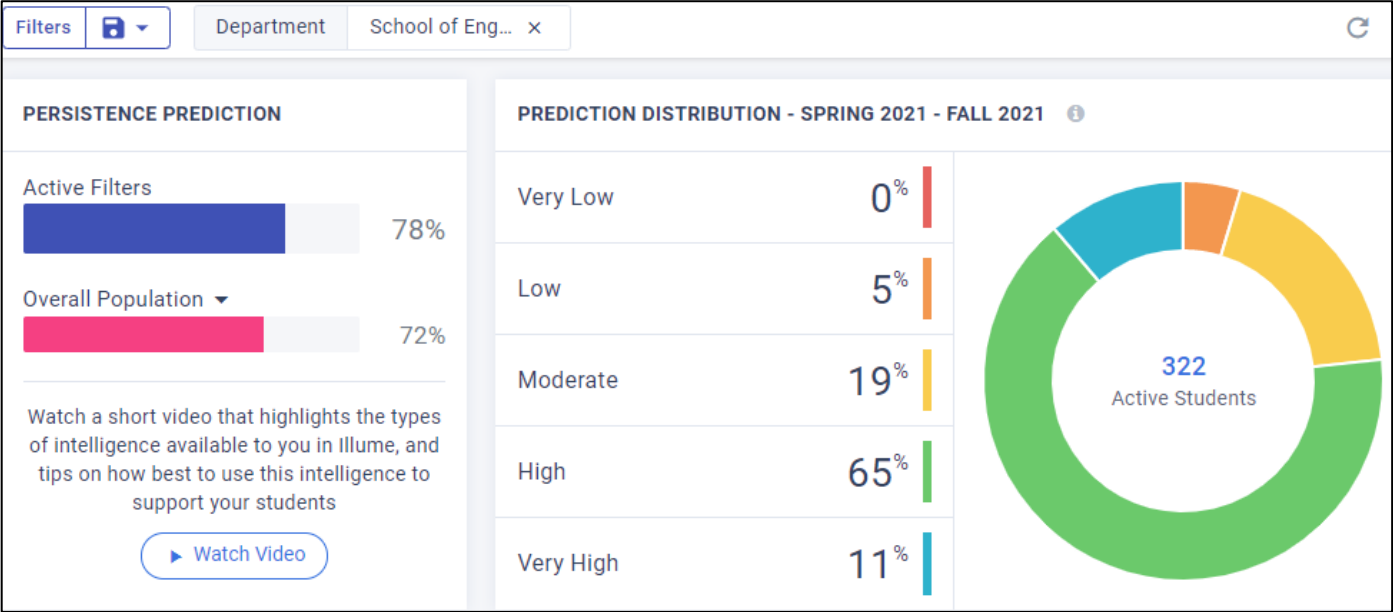
Overall Course Success Rates by Race/Ethnicity

Program vs. Race/Ethnicity	2018-2019		2019-2020		2020-2021	
	Enroll	Success	Enroll	Success	Enroll	Success
6331 - BSET	606	91%	734	88%	902	91%
American Indian/Alas	4	100%	4	100%	4	100%
Asian	20	100%	27	93%	36	92%
Black	38	84%	53	87%	102	86%
Hispanic/Latino	116	97%	131	85%	144	92%
Native Hawaiian					1	100%
Two or More Races	50	96%	62	89%	49	98%
Unknown	12	83%	28	89%	33	94%
White	366	89%	429	89%	533	92%
6333 – BSET Electrical Concentration	175	88%	242	79%	197	78%
American Indian/Alas			7	100%	2	100%
Asian	3	100%	4	75%	5	80%
Black	20	90%	13	46%	30	37%
Hispanic/Latino	43	88%	55	84%	23	65%
Two or More Races	18	78%	34	74%	24	92%
Unknown	1	100%	1	0%	3	100%
White	90	89%	128	80%	110	87%
Grand Total	781	91%	976	86%	1099	89%

■ Indicates a success rate of 90% or higher
■ Indicates a success rate between 70% and 89%
■ Indicates a success rate below 70%

CIVITAS – Illume Students

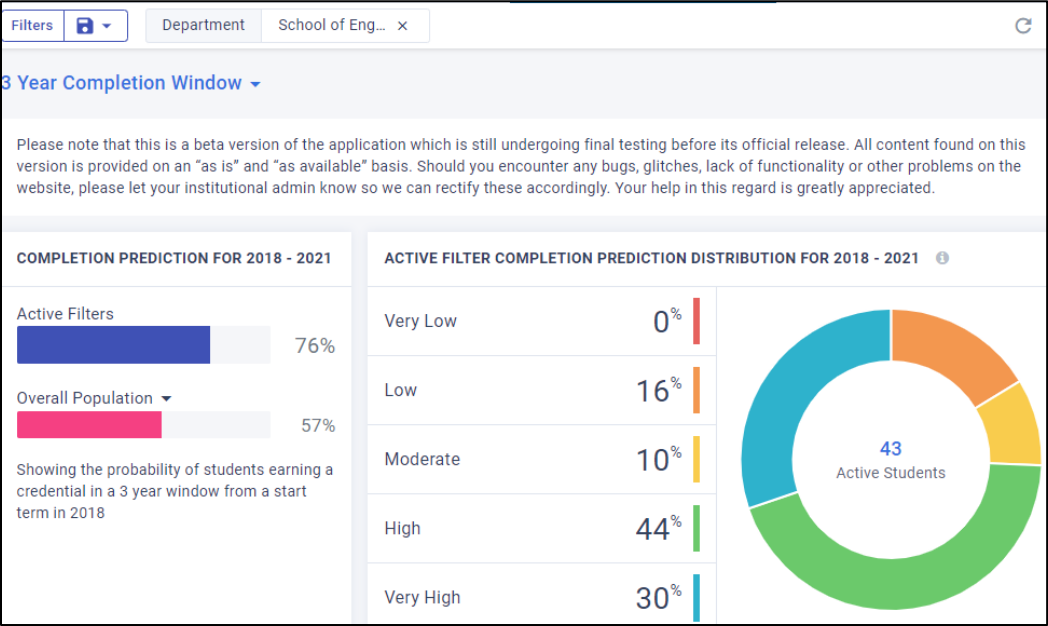
Captured on 3/1/2021



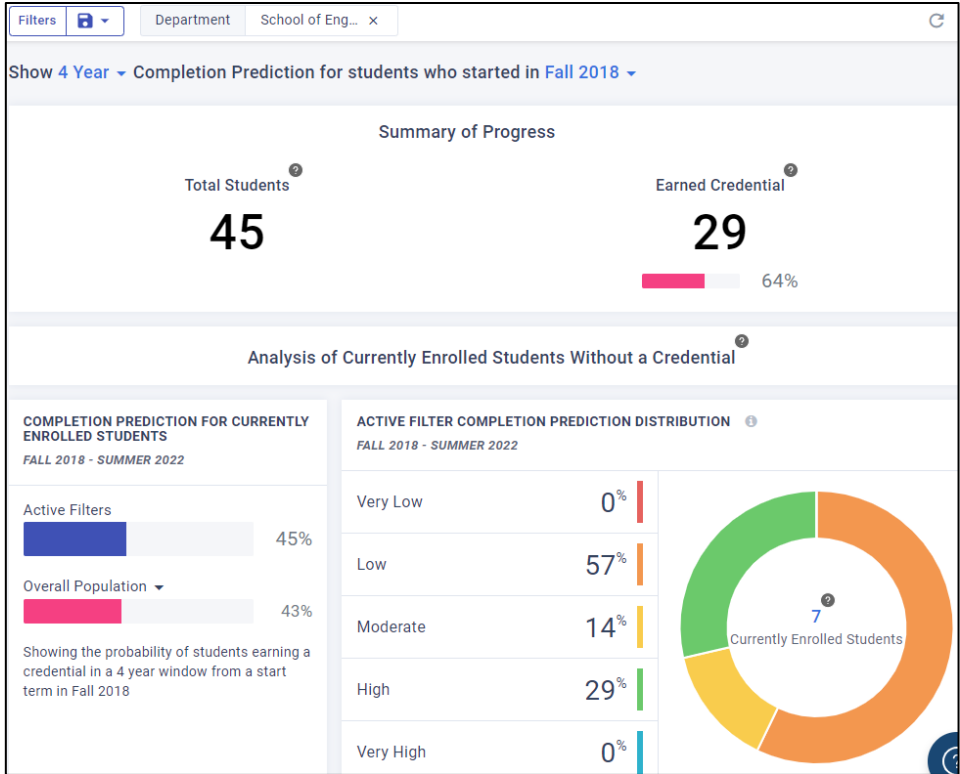
Captured on 2/22/2022

CIVITAS – Completion Insights

Captured on 1/13/2021



Captured on 2/22/2022



CIVITAS – Illume Courses

Explore courses where:

A student's course grade strongly signals graduation likelihood ▾

These are courses where a single letter-grade difference creates the biggest boost in graduation likelihood for an individual student. Advising students to prioritize these courses could increase their graduation likelihood.

